



For Immediate Release
General Distribution

June 23, 2003

Sumitomo Brings 9 Electric Machines to NPE

(Booth #1491, NPE 2003, Chicago, IL) ... With the opening of NPE 2003, the message from Sumitomo Plastics-Machinery was clear: Sumitomo electric machines give molders the power to compete. A total of nine Sumitomo all-electric machines are being demonstrated at the show—five in the company's 5,000 square foot exhibit and four in other companies' booths.

"We're using NPE as a platform to showcase the abilities of our affordably priced electric machines to handle diverse and demanding applications with exceptional speed, precision and energy efficiency," said Jerry Boggs, Executive Vice President, Sumitomo Plastics-Machinery.

"Molders are getting pushed harder and harder with lower parts pricing, lower machine hourly rates, difficult engineering resins, more complex parts with tighter tolerances and requirements for zero defects," Boggs said. "Sumitomo electrics are designed to help molders meet or exceed these requirements with faster speeds, higher pressures, increased precision and applications flexibility, plus, of course, the lower operating costs associated with the electric technology. The combination of all these factors delivers increased overall productivity—that's 'The power to compete.' "

"We are also pointing out in numerous places throughout our exhibit the fact that the 55 to 200 ton SED all-electrics and the 253 through 385 ton SES all-electrics are now being manufactured in Jefferson, Georgia," Boggs said. "Sumitomo has made a strong commitment to North American molders with this state-of-the-art manufacturing facility, and over the last year they have reinforced that commitment with the added capabilities for manufacturing these high-performance electric machines."

In addition to the molding demonstrations described on the following pages, Sumitomo also is using NPE for its North American introduction of the company's new SR Series rotary-table vertical all-electrics and the new SE-HY Series accumulator-assisted electric machines. Separate releases on these two new machine series are contained in this press kit.

(MORE)

Sumitomo (SHI) Plastics Machinery (America), LLC
1266 Oakbrook Drive, Norcross, GA 30093 • Tel: (770) 447-5430 • Fax (770) 441-9168
www.sumitomoPM.com

(Sumitomo Brings 9 Electric Machines to NPE...continued)

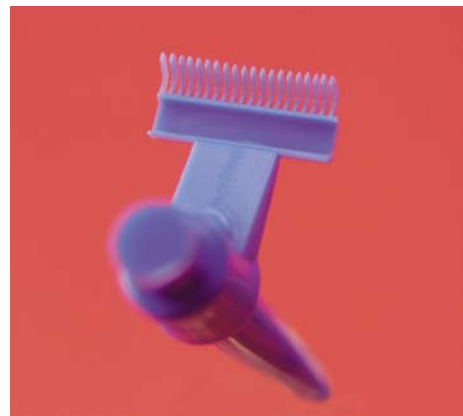
Molding demonstrations in Sumitomo's Exhibit, Booth 1491

Micromolding—Sumitomo and Makuta Technics, Inc., a micromolding company located in Columbus, IN, are literally putting the precision micromolding capabilities of the new SE18D “under a microscope.” The 20 US ton model was recently added to Sumitomo’s popular SED Series of direct-drive all-electric machines. The molding demonstration is for a POM component used in a surgical device for organ suturing. The 0.01 g (0.00035 oz) part is 6.4 mm with 20 long “fingers 0.1016 mm wide and spaced 0.2159 mm apart.

The tiny molded parts will be displayed through a microscope/monitor hookup. This display, as well as the cassette mold and molding demonstration, are courtesy of Makuta Technics. The mold was made by Makuta’s sister company, Sansyu Precision of Takahama City, Japan.

“Even though this part requires a very small amount of resin, to fill out these tiny fingers completely you need high pressures and speeds and precision control,” said Stuart Kaplan, President of Makuta Technics.

With a maximum injection speed of 500 mm/sec (19.7 in/sec), maximum injection pressure of 34,130 psi (2400 kg/cm²), and a response time of 30 milliseconds, the SE18D is designed to provide high-speed filling, high-speed decompression and molding stability for micromolding applications.



Narrow-pitch connector molding—An SE30D is demonstrating high-speed, ultra-high precision connector molding capabilities with a 2-cavity, 0.4 mm pitch, 30-pin connector application running at a cycle time of just 1.97 seconds.

(MORE)

(Sumitomo Brings 9 Electric Machines to NPE...continued)



High-cavitation, thin-wall syringe molding—An SE100D is running a 16-cavity, hot-runner mold for ½ cc syringes, demonstrating the SED’s Center Press Platen (CPP) design with optimum clamp force distribution. This minimizes deflection and core shift to ensure consistent wall thickness in high-volume, thin-wall applications. Mold courtesy of Cavaform International LLC in St. Petersburg, FL (exhibiting in Booth 5742 at NPE).



Vertical insert molding—Sumitomo’s new SR Series machine is molding a 30% glass-filled PBT, insert-molded automotive sensor housing with a brass insert. For more information on this new machine series and the molding demonstration, please see press release titled “**Sumitomo Debuts All-Electric Vertical at NPE**” in this press kit.



High-speed CD/DVD clamshell molding—An SE350S mid-size all electric is demonstrating high-volume/high-yield precision molding with consistent, fast filling of a thin-wall part with a living hinge. The SES optional multi-toggle clamp force control allows injection fill to begin during clamping, shortening overall cycle time. The 4-cavity, hot runner, pneumatic valve-gate mold is courtesy of Stomp, Inc.

More information on these applications and the machines running them, as well as the Water-Assist Molding application described below, can be found in the Sumitomo NPE 2003 booth brochure which is included in this press kit.

(MORE)

(Sumitomo Brings 9 Electric Machines to NPE...continued)

Sumitomo electric machines in other exhibitors' booths



Water-assist molding—A Sumitomo SE180D direct-drive all electric is also being featured in the Cinpres Gas Injection, Inc. exhibit in Booth #5980. Cinpres will be demonstrating their Water-Assist Molding (WAM) technology, molding a 30% glass-filled nylon, hollow-core handle weighing 3.53 oz (100 g).

Other demonstrations of Sumitomo machines at NPE include:

Machine	Company/Location	Application
SE30D	Incoe Corp. North Level 3, Booth #4716	Consumer product
SE100D	Sailor USA Inc., East Level 3, Booth #9546	Consumer product
SE100D	Yushin America, Inc., South Level 3, Booth #2093	Cryogenic vial

Sumitomo Plastics-Machinery provides a complete line of injection molding machines, from 20 to 716 US tons, including all-electric horizontal and vertical models, hybrid electrics, hydraulic and hydromechanical clamp models, ultra high-speed toggles and disc molding systems.

(END)

PR Contact: Susan Hunt Levin
PH: (216) 932-3168, email: mktgmatters@aol.com

Please forward all reader inquiries to: Karen Stufferbeam
ULTIMATE Lead Systems
401 Front Street
Berea, OH 44017